

GF-8

CNC MULTI-AXIS SPRING FORMER

Superior cost-effective forming machine

1 motor-for-twin slides system as alternative to cam axis control system

8 slides can be controlled independently

Setup time can be reduced dramatically



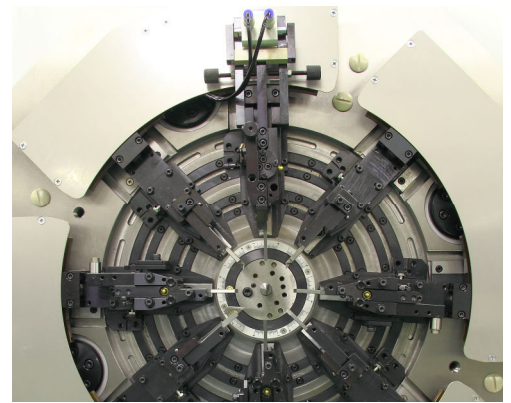
R servo drive shown on the photo is option

ORII & MEC CORPORATION

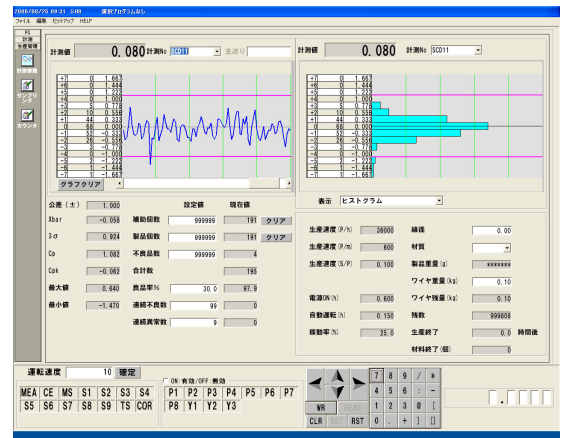
1-17-24 Kamiaoki-Nishi Kawaguchi-shi Saitama 333-0845 Japan
TEL: (81) 48-256-3511 FAX: (81) 48-256-3595
<http://www.oriimec.co.jp/> e-mail: info-spring@oriimec.co.jp

Features

- 1Motor-for-twin slides control system: 2 slides are controlled by 1 axis servomotor, i.e. 8 slides are controlled by 4-axis. No need to make adjustments of timing of cams and/or stroke.
- Very easy to change slide layout. Just change each tool holder unit.
- Allowable adjustment angle to fit each slide is 28 degrees at maximum.
- Each slide is displayed in mm unit, and it runs at the constant speed.
- Using square shaped quill makes it possible to form products that requires significant clearance when it twirls.
- 4 R servo slides can be used at maximum as option.
- Servo slide to run two slides simultaneously is available.
- Program screen consists of all-axis always displayed and other cells movable by vertical scroll, and Program flow and each axis operation can be recognized with one look.
- Easy to make long program and also shorten setup time with multifunction; jump, 1 cycle/Pause, changing operation mode during operation, auto-cut and so on.
- Gauging, Coil end control, Input/Output and such program screen comes on independently.
- Motor Sensor system is equipped on each slide. Contact sensor is applied to specified drive motor's positioning function, and it measures free length, outside diameter, leg angle and such at 1/1000mm resolution same as capacitance gage. And also, graph display and correction control are available.



Simple front design



Graphs and Production control items are displayed in real time.

Machine specifications

| | | | | |
|----------------|---|-----------------|---|-----------------------|
| Wire dia. | φ0.2~0.8mm | Control device | Max. 16-axis to be controlled by Computer – OS Windows XP | |
| Index | D/d 4 or more | Display | 17" TFT color LC display | |
| Twirl distance | Radius 36mm when square quill is applied. | External memory | USB memory | |
| Slides | Slide base | 8 units | Service Temp. | 0~40°C |
| | Body slide | 1 unit | Power source | AC 200V, 3-phase, 20A |
| | Bending slide | 3 units | Service pressure | Max. 0.5 MPa |
| | Cut slide | 4 units | Net weight | 450 kg |
| Option | R Servo slide | 2 units | | |

