

TM-3II

CNC MULTI-AXIS SPRING FORMER with rotary tooling table

The rotary tooling system gives stable wire line
Evolved in to ultimate forming machine suitable for ultra fine wire
There is no dead zone, and constant position of tooling is kept
with auto-compensation while the table is turning
MNO (Mec New Operation system) equipped controls operation, gauging and
multifunctional production management

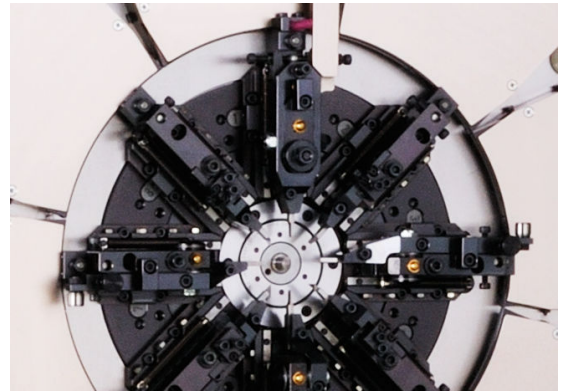


ORII & MEC CORPORATION

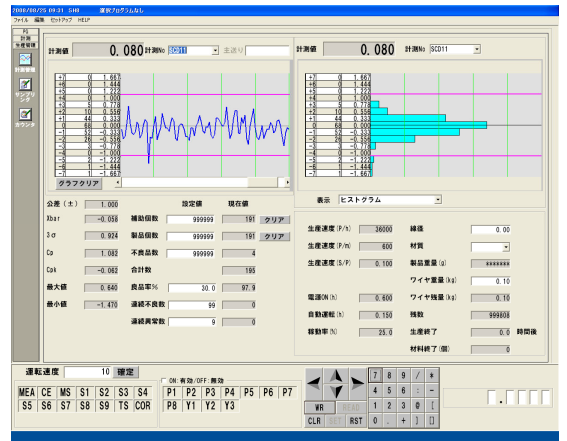
1-17-24 Kamiaoki-Nishi Kawaguchi-shi Saitama 333-0845 Japan
TEL: (81) 48-256-3511 FAX: (81) 48-256-3595
<http://www.oriimec.co.jp/> e-mail: info-spring@oriimec.co.jp

Features

- Tooling table equipped with 8 forming slides turns around a quill in the center at high speed. Slides can be set up at any angle for coil, and setup and shape adjustment can be made easily.
- Newly developed 1 motor-for-twin slides system makes it possible to form at any angle for no dead zone.
- Tool position is unchanging by auto-compensation even though tooling table turns. As a result, no need to re-setup stroke even forming direction is corrected.
- Position setup follows slide number, and no need to change drive motor number even though table rotation angle is changed.
- Modification of quill height from tooling table to 21mm from 2mm of TM-3 improves operation drastically.
- 48 mm length wire guide available that is 7mm shorter than that for conventional TM-3.
- RR servo slide and English hook slide are available as option.
- Program screen consists of all-axis always displayed and other cells movable by vertical scroll, and Program flow and each axis operation can be recognized with one look.
- Easy to make long program and also shorten setup time with multifunction; jump, 1 cycle/Pause, changing operation mode during operation, auto-cut and so on.
- Gauging, Coil end control, Input/Output and such program screen comes on independently.
- Motor Sensor system is equipped on each slide. Contact sensor is applied to specified drive motor's positioning function, and it measures free length, outside diameter, leg angle and such at 1/1000mm resolution same as capacitance gage. And also, graph display and correction control are available.



Tooling table without dead zone



Graphs and Production control items are displayed in real time.

Machine specifications

Wire dia.	φ0.05~0.3mm	Control device	Max. 16-axis to be controlled by computer – OS Windows XP	
Index	D/d 4 or more	Display	17" TFT color LC Display	
Twirl distance	Radius 4mm(15mm to machine face)	External memory	USB memory	
Slides	Body slide	1 unit	Service Temp.	0~40°C
	Bending slide	3 units	Power source	AC 3-phase, 200V, 20A
	Cut slide	4 units	Service air pressure	Max. 0.5 MPa
	RR Servo slide	Option 3 units at max.	Net weight	450 kg

